

ROLE OF THE FARM ADVISORY SERVICE IN RDP PROGRAM IN CROATIA

XXX. TRADICIONALNI POSVET JAVNE SLUŽBE KMETIJSKEGA SVETOVANJA
18-19. NOV. 2015, LAŠKO, SLOVENIJA

Hrvoje Horvat, DVM

basic data



**Since 1990 in various organizational forms
successor of the agricultural stations**

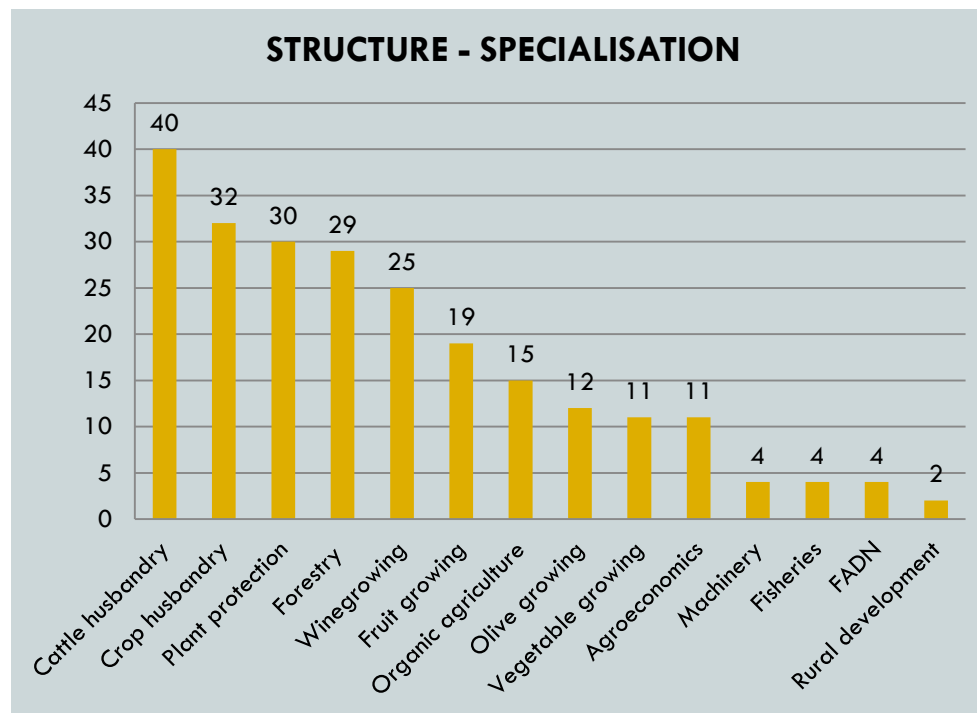
- ❖ 21 regional offices in all counties
- ❖ 110 offices in total
- ❖ 260 employees
- ❖ Central office in Zagreb – 35 employees
 - coordinators
 - international cooperation
 - Accounting, PR, HR, law

regional differences

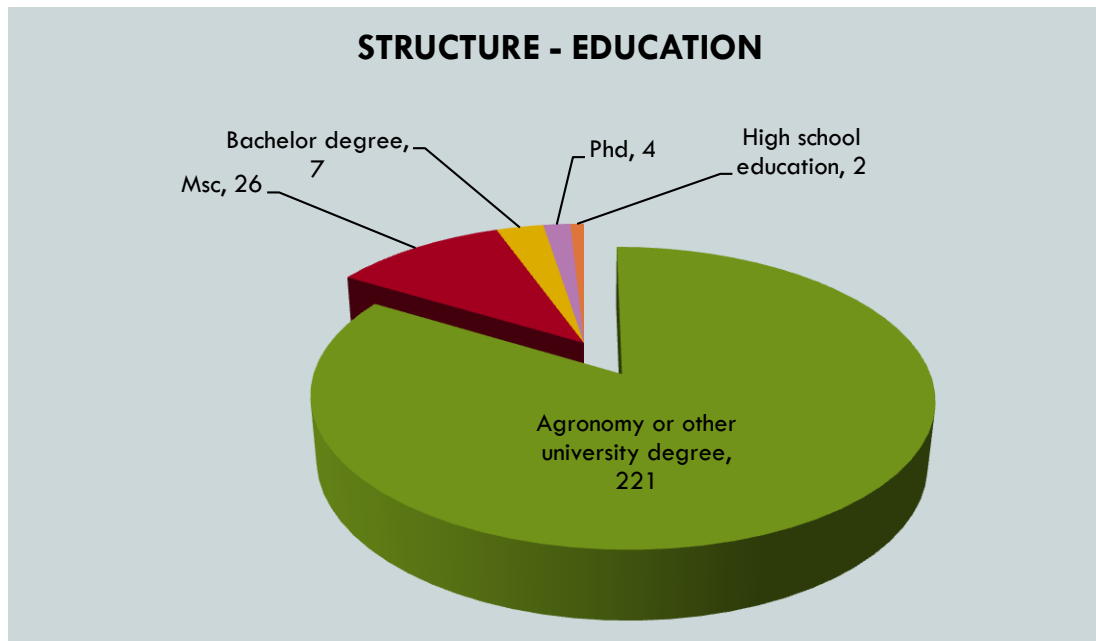


- ❖ Variety of climatic and agricultural regions
- ❖ Each region has specific requirements
- ❖ Need for great variety of the approach and methodology

employees



employees

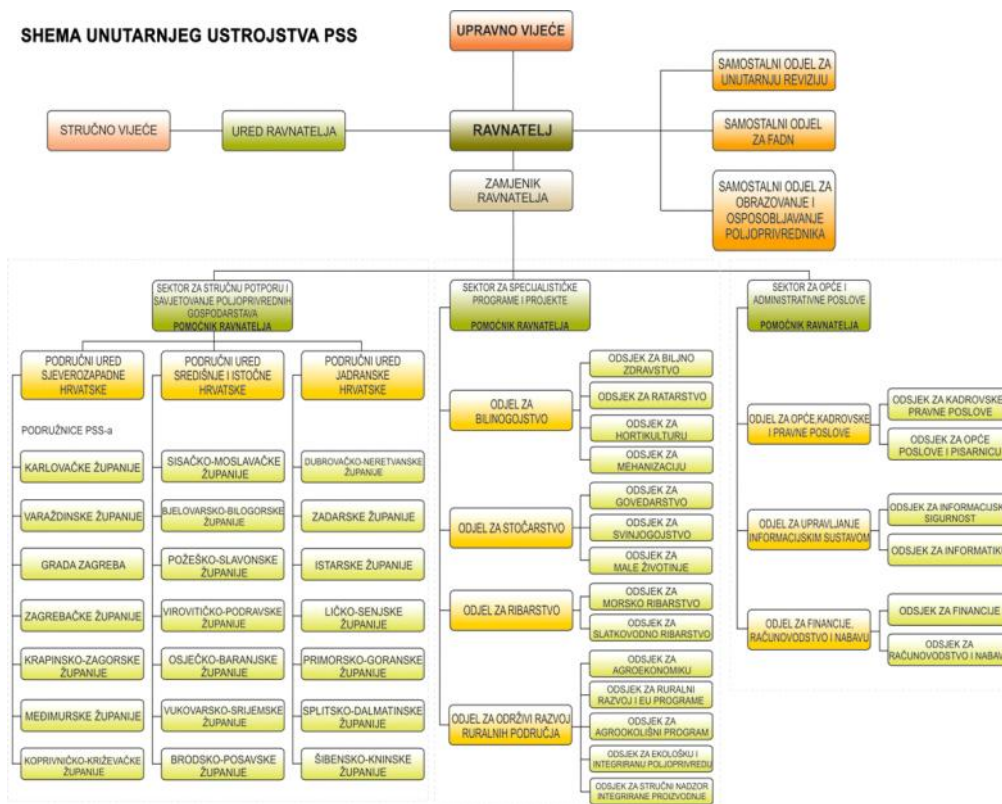


activities

BASIC ADVISORY ACTIVITIES	
General information – office/field Lectures, demonstrations, field days Expert articles in the media Advising on Cross compliance Reporting and forecasting activities in plant protection Working with associations of farmers and fishermen Projects	52,5 %
ADMINISTRATIVE TASKS FOR MoA, PAYING AGENCY AND LOCAL COMMUNITY	
ARKOD AGRONET – farmers application for the direct payments FADN TISUP – collecting of information for the MoA Cooperation with local government	30,9 %
GENERAL TASKS	
Personal training, administrative work Management Other	16,6 %
IN TOTAL	100%

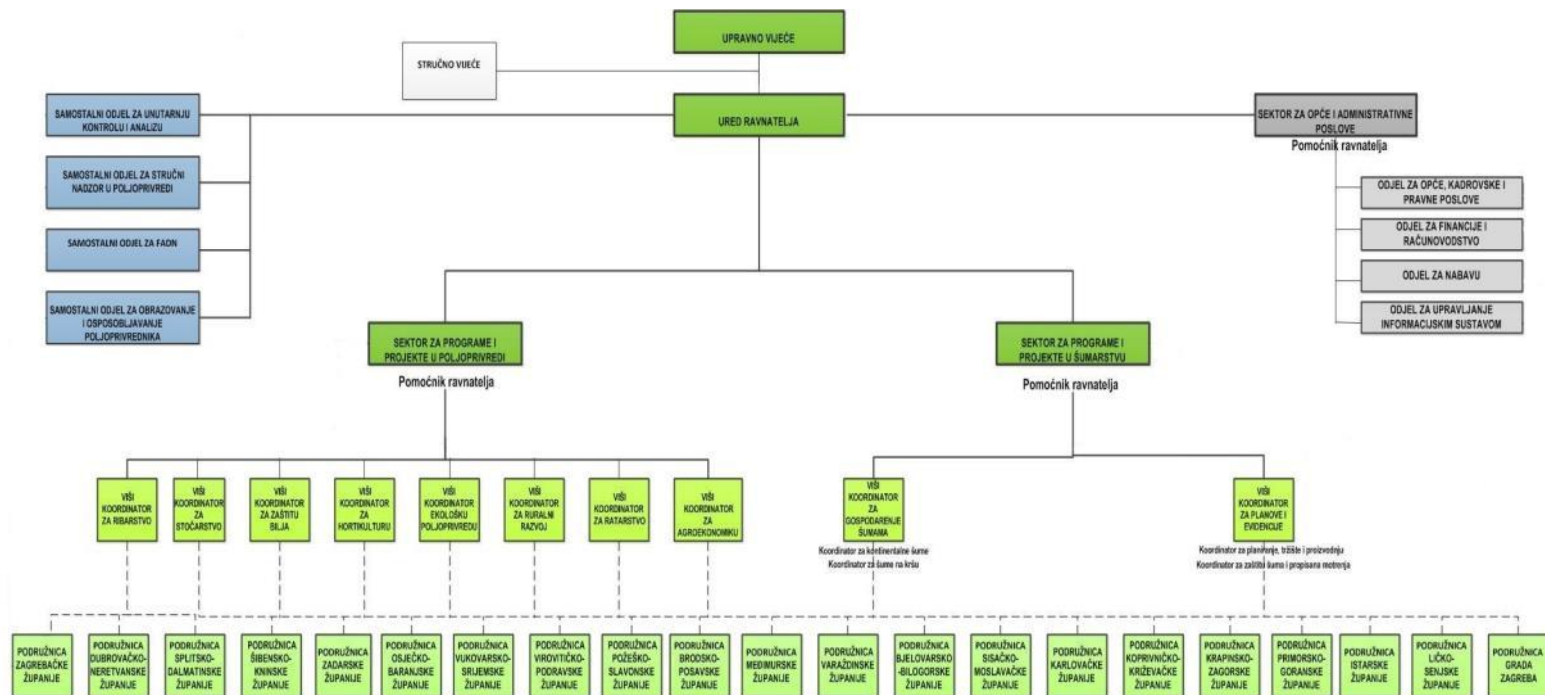
structure

FORMER ORGANIZATIONAL STRUCTURE – (till 6/2014)



structure

CURRENT ORGANIZATIONAL STRUCTURE (networks)



financing

ALL SERVICES FREE OF CHARGE FOR THE CLIENTS

CO-FINANCING

- Charging only for service of the supervision of the integrated production - strict allocation of the funds, 600 customers.
- FADN system maintenance – funds available per farm.

CO-FINANCING FROM M01 AND M02 of the Rural Development Program

Vocational education and on-farm advisory work will be paid from the EAFRD funds

COMPARISON – OTHER INVOLVED INSTITUTIONS

	Approx. EUR	Share – national budget %	Share – Agr budget %
MINISTRY OF AGRICULTURE	533,333,200	2.82	92.59
Paying Agency	20,600,000	0.10	3.55
Agriculture Land Agency	2,400,000	0.01	0.43
Croatian Agricultural Agency	7,700,000	0.04	1.32
Advisory Service	5,200,000	0.02	0.97

financing from M01

Transfer of knowledge and informing activities

1.1 SUPPORT FOR VOCATIONAL TRAINING AND SKILLS

Operation 1: Vocational training for cross-compliance and package „agriculture, environment, climate change and organic production”

- Compulsory for all M10 and M11 beneficiaries
- 18h (3 days) of education
- Free and open for non M10 and M11 beneficiaries

Operation 2: Vocational training

- Open for all beneficiaries
- Up to 60 hours
- Min 30% of practical education

financing from M01

Transfer of knowledge and informing activities

Acceptable beneficiary of the measure – Advisory service in Croatia

From march 2015

Defined topics of education

Prepared Program of vocational training with description of topics and duration

Undertaken Knowledge assesment of employees and formed groups of educators

Analysed worth of working hours of employees – will be based on individual calculation

financing from M01

Transfer of knowledge and informing activities

Acceptable costs

- costs for experts / teachers: salaries / fees, travel expenses, daily allowances and accommodation;
- costs for the preparation and development of materials / teaching aids and equipment;
- cost of space for a training program;
- costs for participants: travel costs, accommodation costs and costs of refreshments;
- indirect costs (amounting to 15% of direct personnel costs).



financing from M01

Transfer of knowledge and informing activities

Expectations in 2016?

Min 5900 customers

Average group 25 people

236 groups = 710 days of education

Approx 106.000 hours



financing from M02

Advisory services, services for farm management and farm support

2.1 SUPPORT FOR ADVISORY SERVICES

Operation 1: Advising for cross-compliance and package „agriculture, environment, climate change and organic production”

Operation 2: Advising on modernization and competitiveness of farms

Operation 3: Advising for forest owners

- Open for all beneficiaries
- Up to 1.500 eur/advice
- Max 2 advices in 3 years



financing from M02

Advisory services, services for farm management and farm support

Acceptable beneficiary of the measure – Advisory service in Croatia

From march 2015

- Defined catalog of services
- Defined advisory packages – up to 50 packages according to specifics of production
- Developed farm card – general data and history of advisory work on farm
- Online system for analysis of work of advisors – issuing invoices for Paying agency

financing from M02

Advisory services, services for farm management and farm support

Acceptable costs

- Costs for advisors (salaries, allowances, travel expenses and accommodation)
- Indirect costs
- external services
- The costs of preparing materials
- The cost of space

Conditions

- Advising adapted to each farm
- Confidence – protection of private data
- Must ensure the availability and quality of advising in the whole of Croatia
- Type and quality of consultation in compliance with MP
- Annual plan will set goals and priorities for the advising
- Avoidance of conflict of interest
- In the case where the SS no experts of appropriate specialization - established associates.

financing from M02

Advisory services, services for farm management and farm support

Expectations in 2016?

Aprox 3.500 farmers

Aprox 20h/farm

Approx 72.000 working hours on advising



financing from M02

Advisory services, services for farm management and farm support

2.3 SUPPORT FOR ADVISORY SERVICES

- Up to **200.000 EUR** for education/3 years
- Knowledge assessment
- Yearly education plan – theoretical and practical aspects
- Only for field advisors



conclusion



- NEW RECOGNITION
- NEW RISKS/CHALLENGES
- NEW OPPORTUNITY

Thank you!