

STANJE V KMETIJSTVU SLOVENIJE

XXVI tradicionalni posvet
Javne službe kmetijskega svetovanja
Grm Novo mesto, 19. December 2011

M. Rednak, Kmetijski inštitut Slovenije
Oddelek za ekonomiko kmetijstva

Prispevek je pripravljen na podlagi rezultatov analitične naloge Spremljanje razvoja kmetijstva v Sloveniji v letu 2011, katere naročnik in financer je Ministrstvo za kmetijstvo, gozdarstvo in prehrano.

VSEBINA

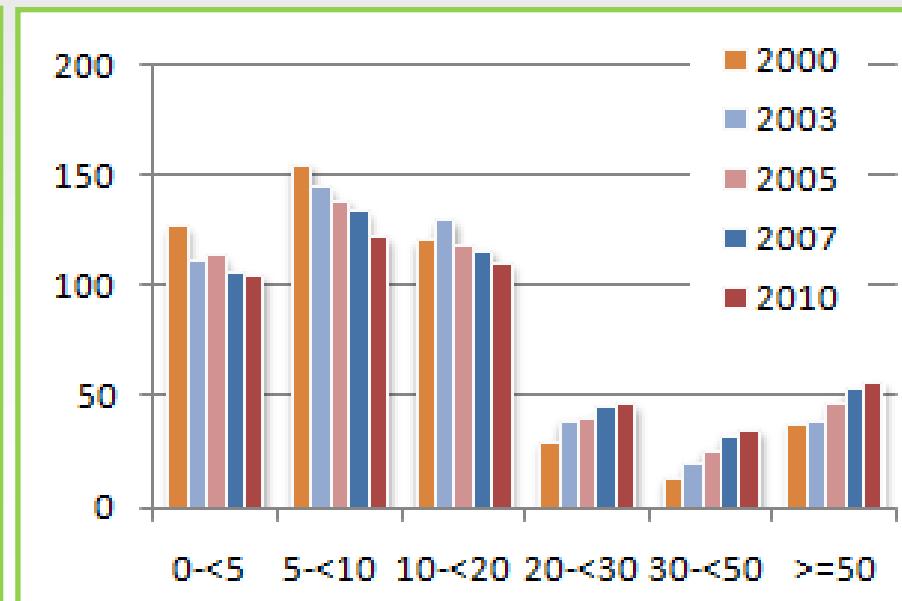
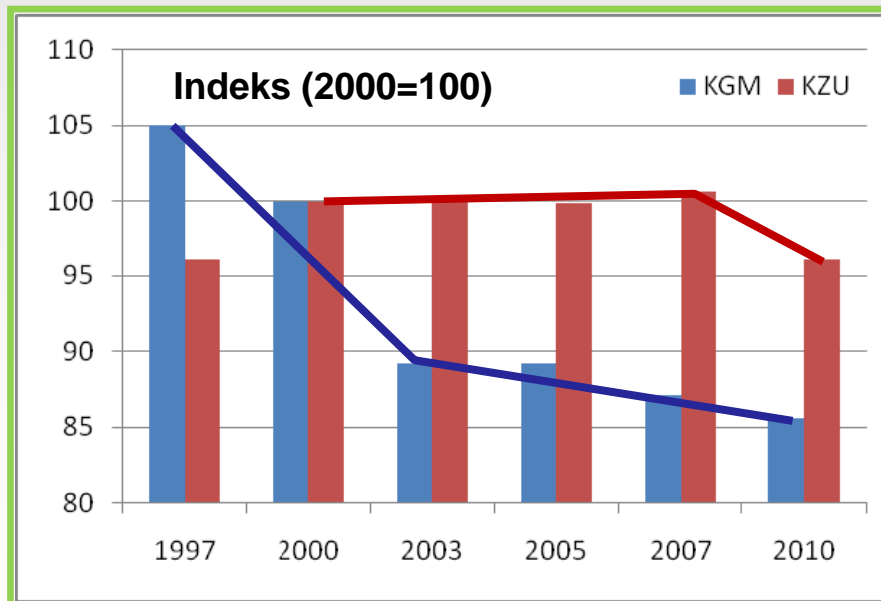
- Potenciali
- Proizvodnja
- Zunanja trgovina
- Cene
- Proračun
- Dohodek

Potenciali

KMETIJSKA GOSPODARSTVA OB POPISIH

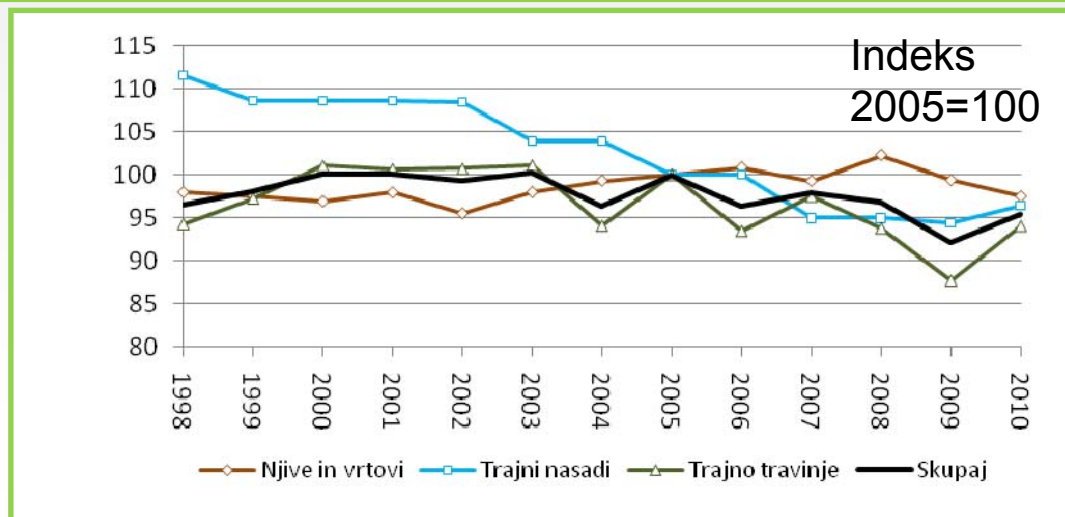
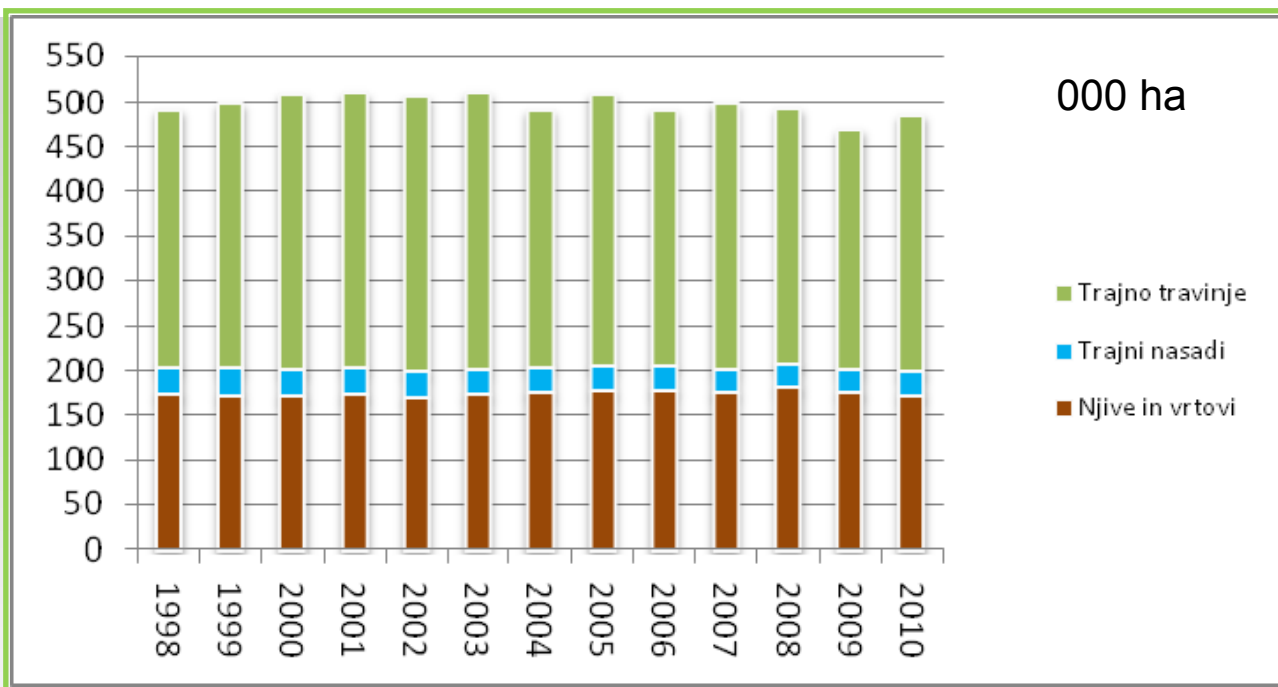
	1997	2000	2003	2005	2007	2010
Število KMG (000)	90,8	86,5	77,1	77,2	75,3	74,7
KZU (000 ha)	466,6	485,9	486,5	485,4	488,8	476,6
Povprečno KZU/KMG (ha)	5,1	5,6	6,3	6,3	6,5	6,4
Delež KMG z ≥ 20 ha KZU (%)	1,1	2,1	3,1	3,6	4,2	4,5
Delež KZU na KMG z ≥ 20 ha KZU (%)	13,2	16,9	20,4	23,5	26,9	29,0

Površina KZU po velikostnih razredih (000 ha)



Potenciali

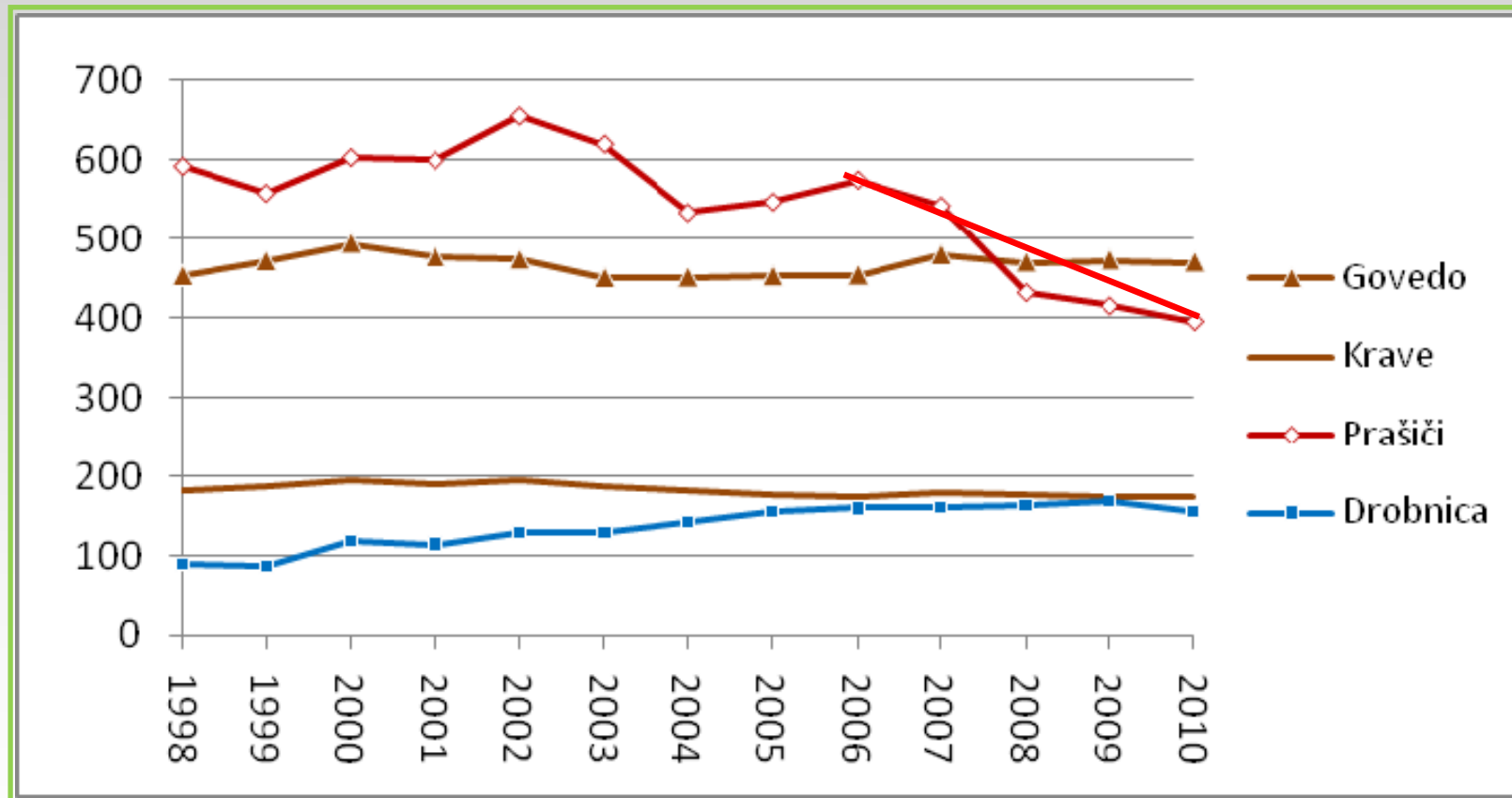
KMETIJSKA ZEMLJA V RABI



Vir: SURS

Potenciali

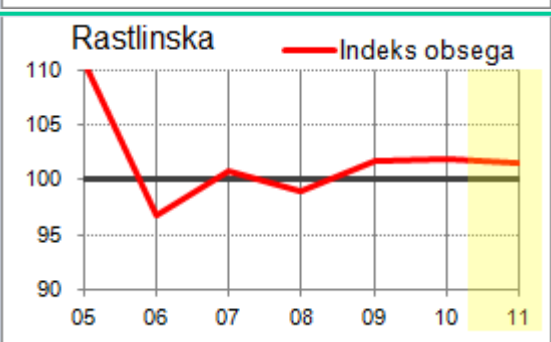
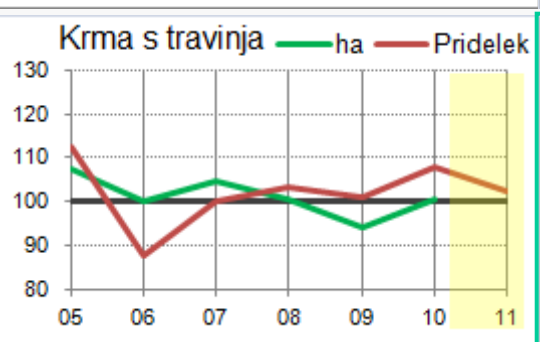
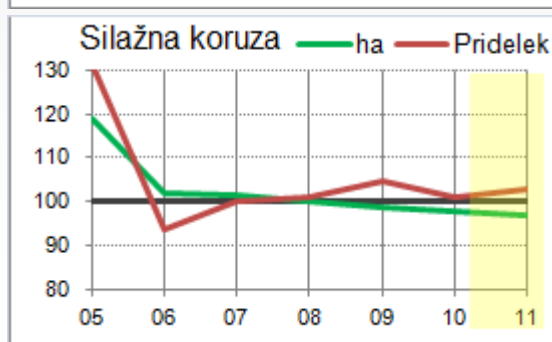
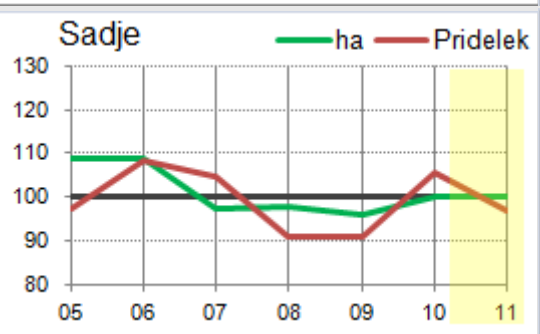
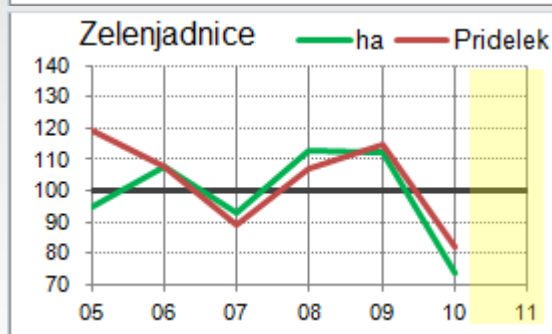
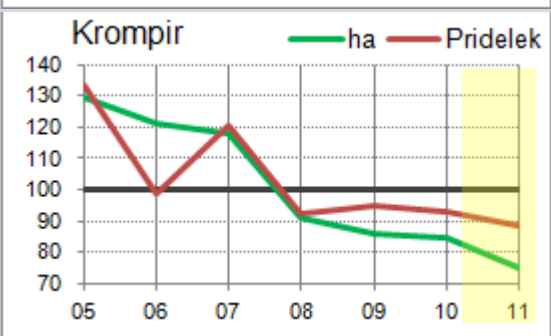
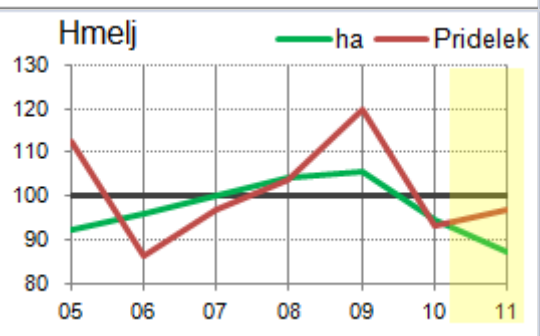
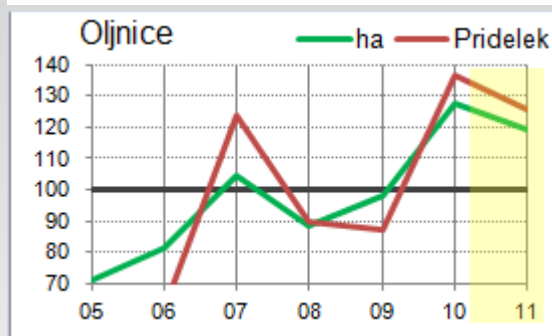
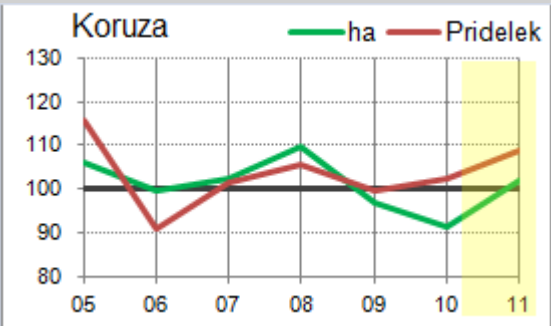
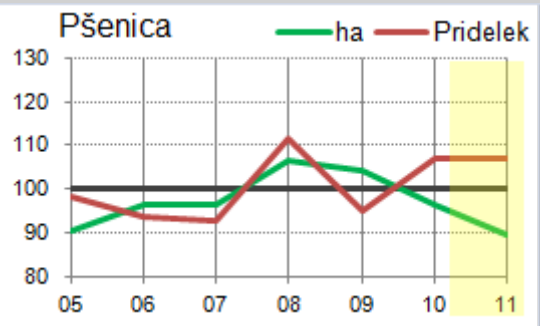
ŠTEVILO GOVEDI, PRAŠIČEV IN DROBNICE (konec leta; tisoč glav)



Vir: SURS

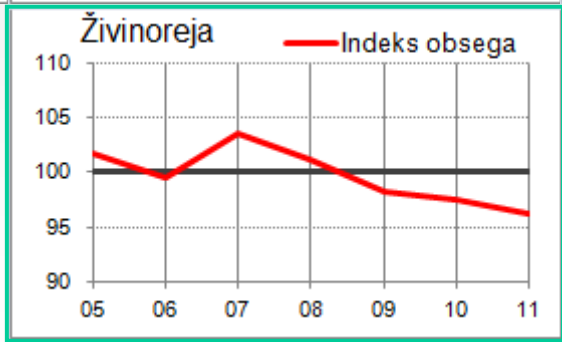
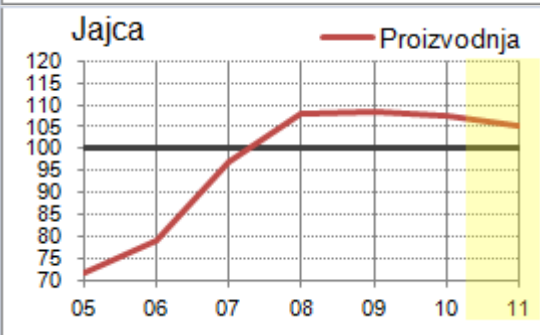
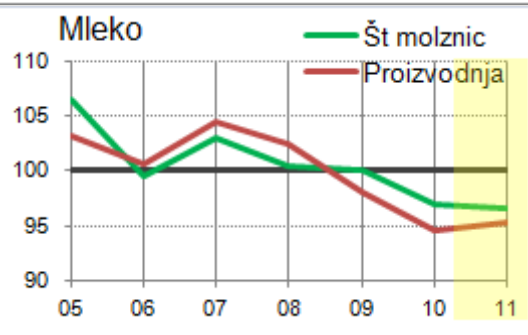
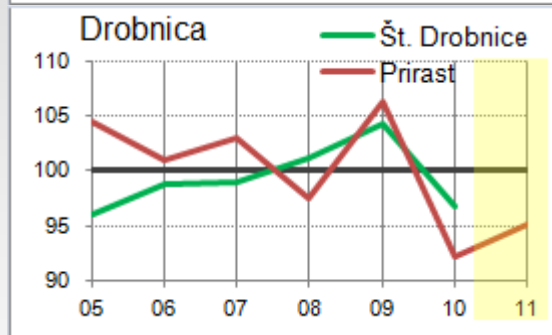
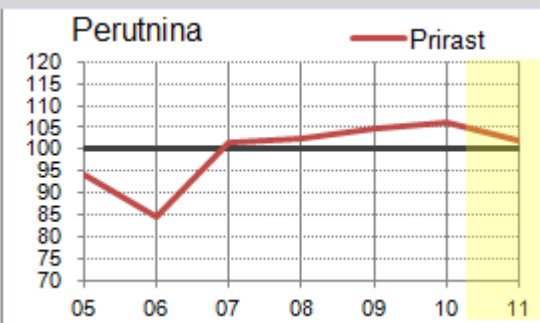
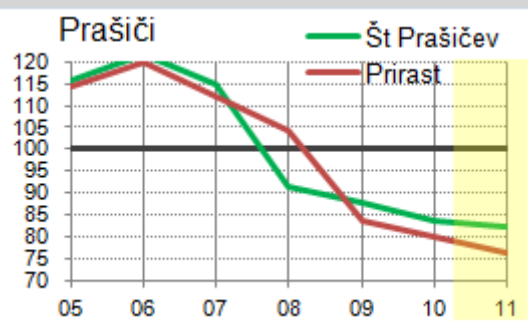
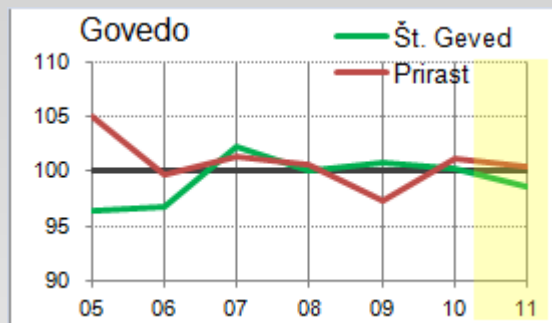
POVRŠINA IN PRIDELKI

Povprečje 2006-2010 = 100



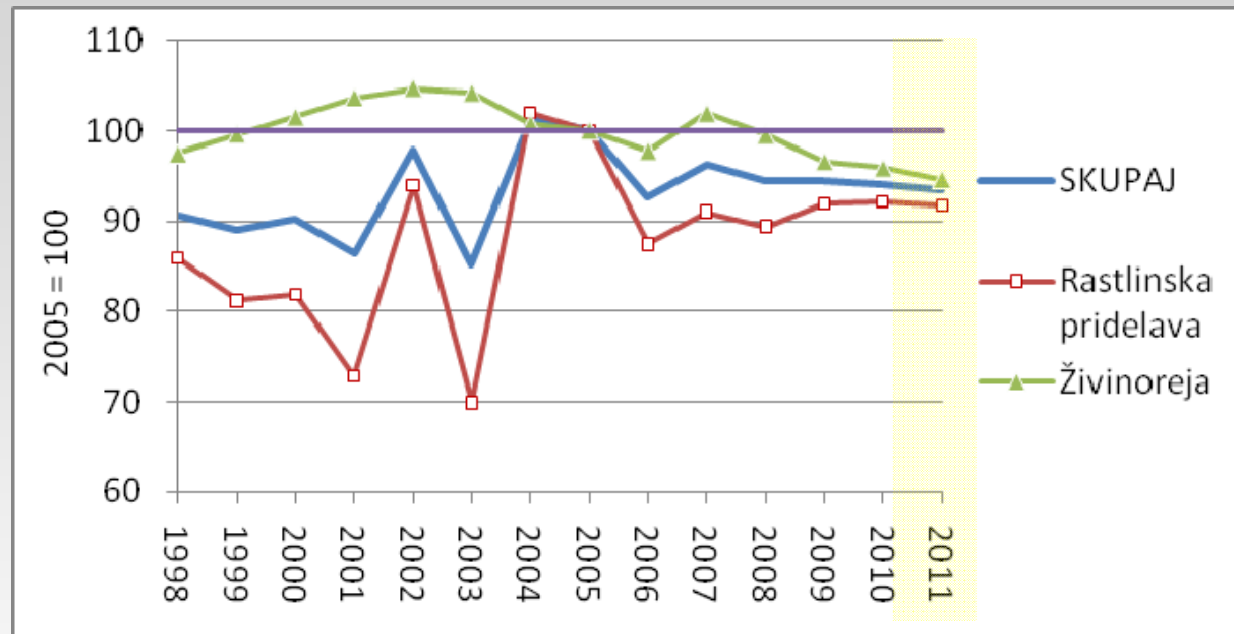
STALEŽ IN PROIZVODNJA V ŽIVINOREJI

Povprečje 2006-2010 = 100



Proizvodnja

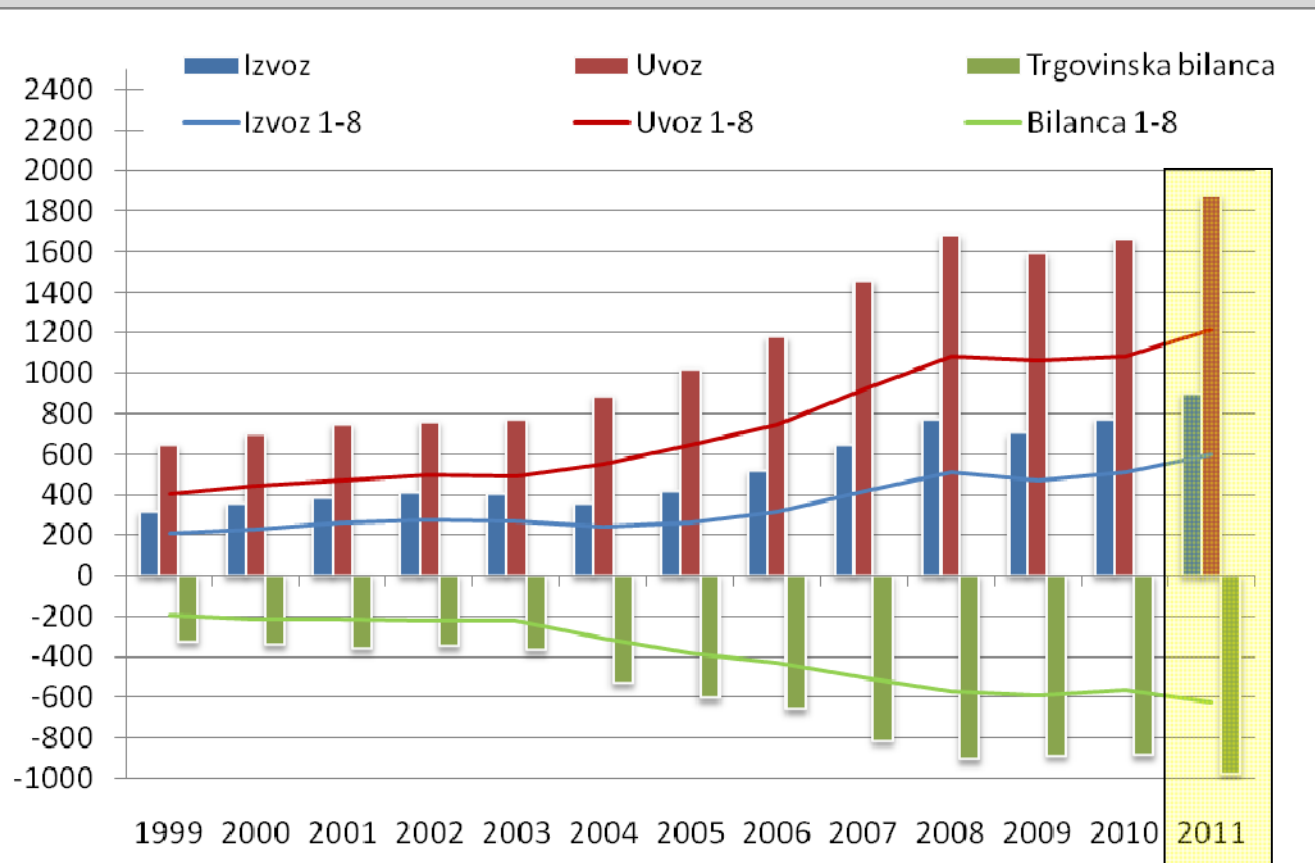
INDEKS FIZIČNEGA OBSEGA PROIZVODNJE (2005 = 100)



	Rastlinska	Živinoreja	Skupaj
2009/2008	2,8	-2,9	0,0
2010/2009	0,1	-0,7	-0,3
2011/2010	-0,4	-1,3	-0,8

Zunanja trgovina

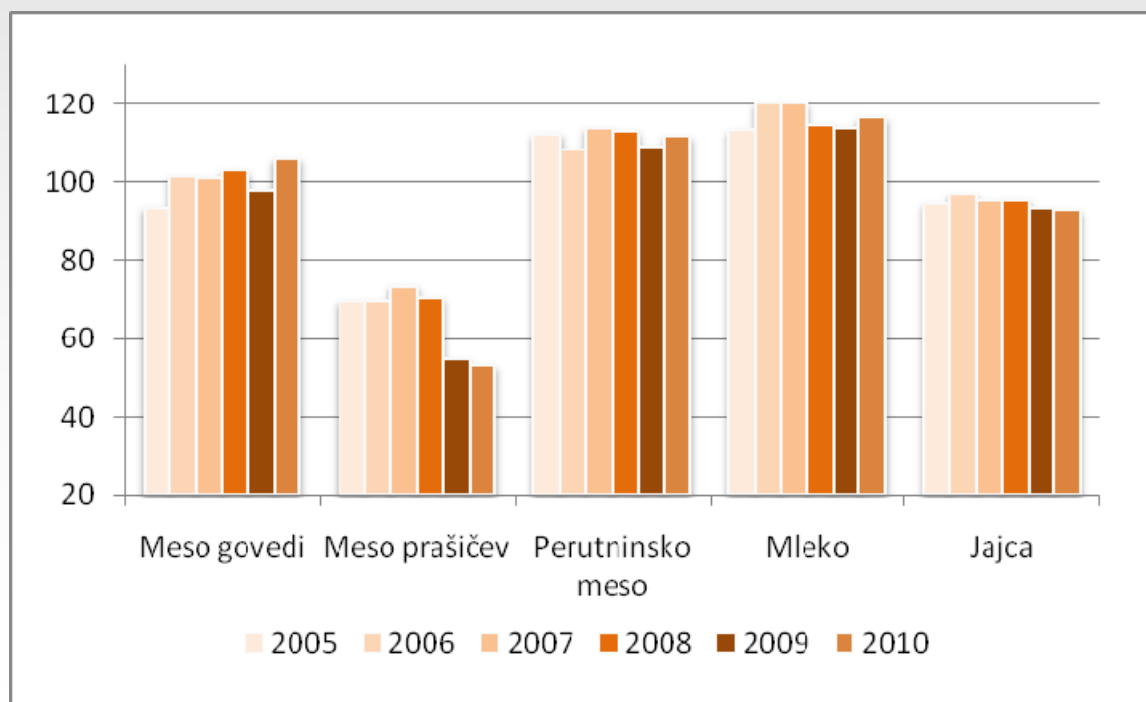
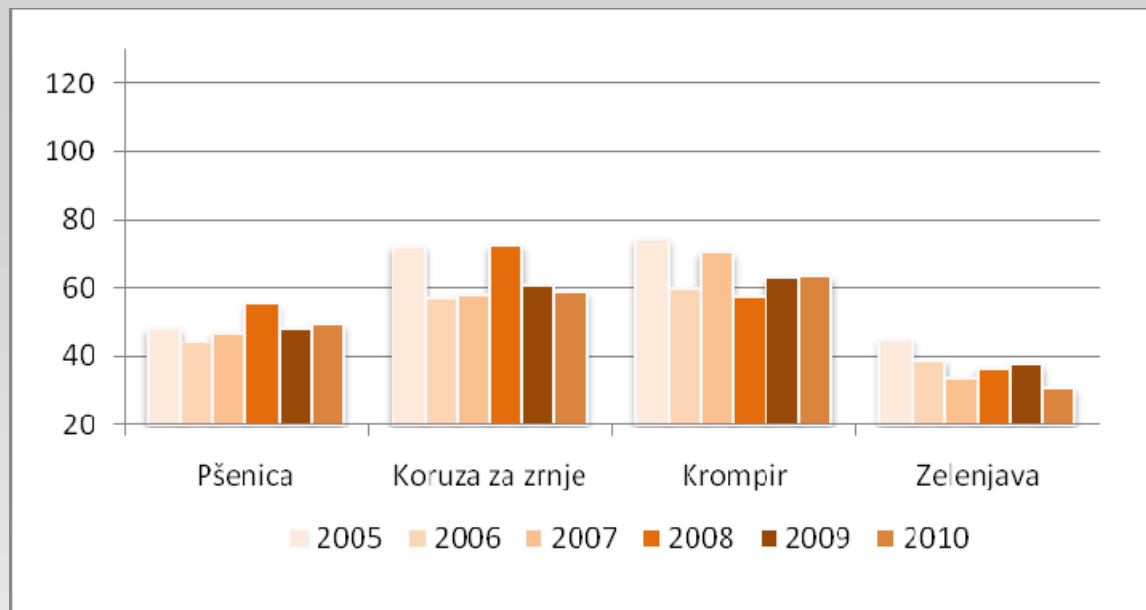
IZVOZ IN UVOZ TER ZUNANJE TRGOVINSKI SALDO AGROŽIVILSKIH PROIZVODOV (MIO EUR)



Vir: SURS, obdelava KIS

Samooskrba

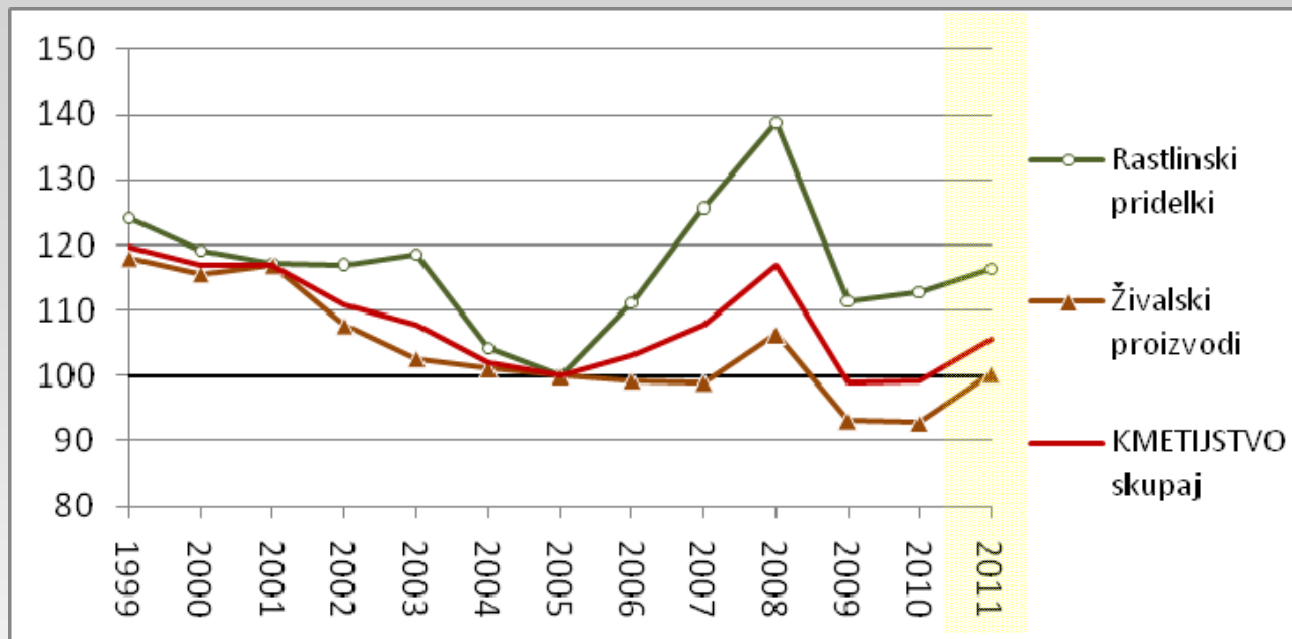
STOPNJE SAMOOSKRBE S POMEMBNEJŠIMI KMETIJSKIMI PRIDELKI (%)



Vir: KIS

Cene

REALNI INDEKSI CEN- output (2005 = 100)



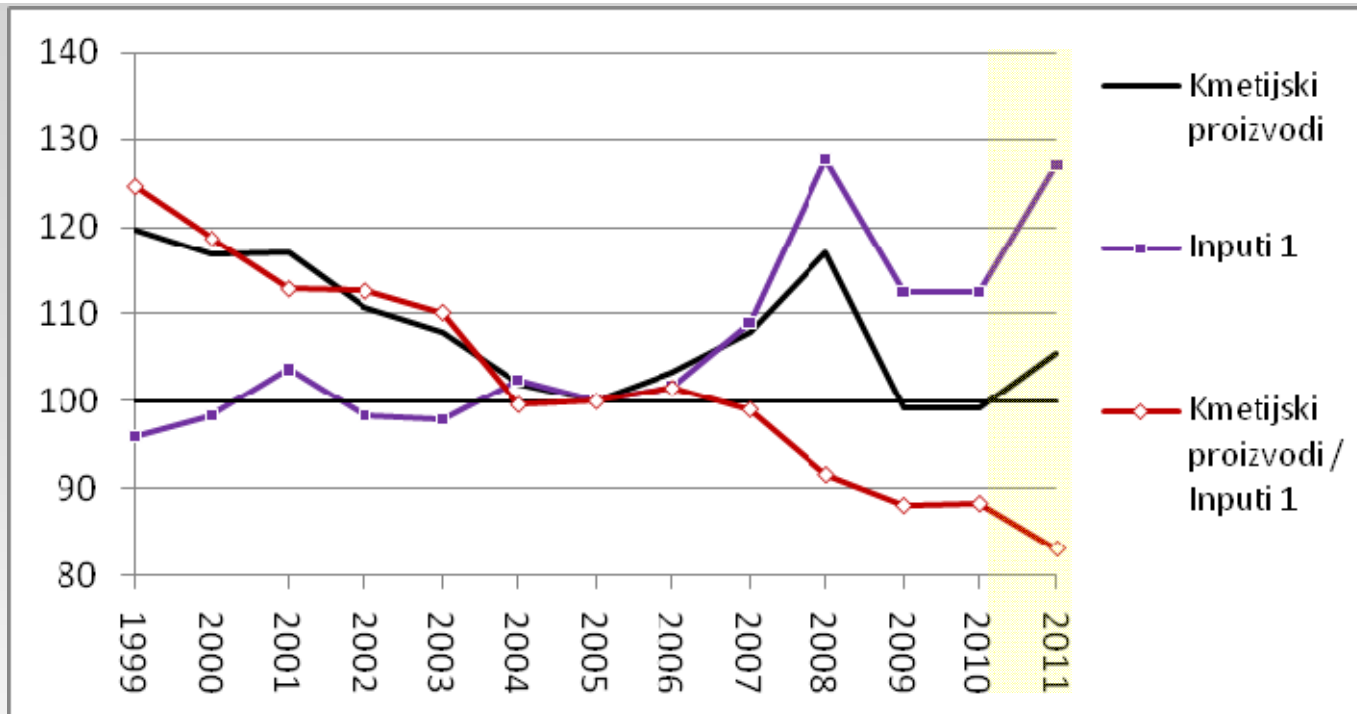
Vir: SURS (statistika cen); ocena KIS

	08/07	09/08	10/09	11/10
Rastlinski pridelki	110	80	101	103
Živalski proizvodi	107	88	100	108
SKUPAJ	108	85	100	106

	08/07	09/08	10/09	11/10
Žito	89	66	137	124
Oljnice	145	77	106	129
Hmelj	179	43	57	46
Zelenjadnice	101	93	110	99
Sveže sadje	130	77	101	101
Grozdje za predelavo	106	89	93	85
Govedo	100	100	97	110
Prašiči	105	92	98	104
Perutnina	111	94	98	105
Mleko	111	79	100	111

Cene

REALNI INDEKSI CEN - pariteta/(2005 = 100)



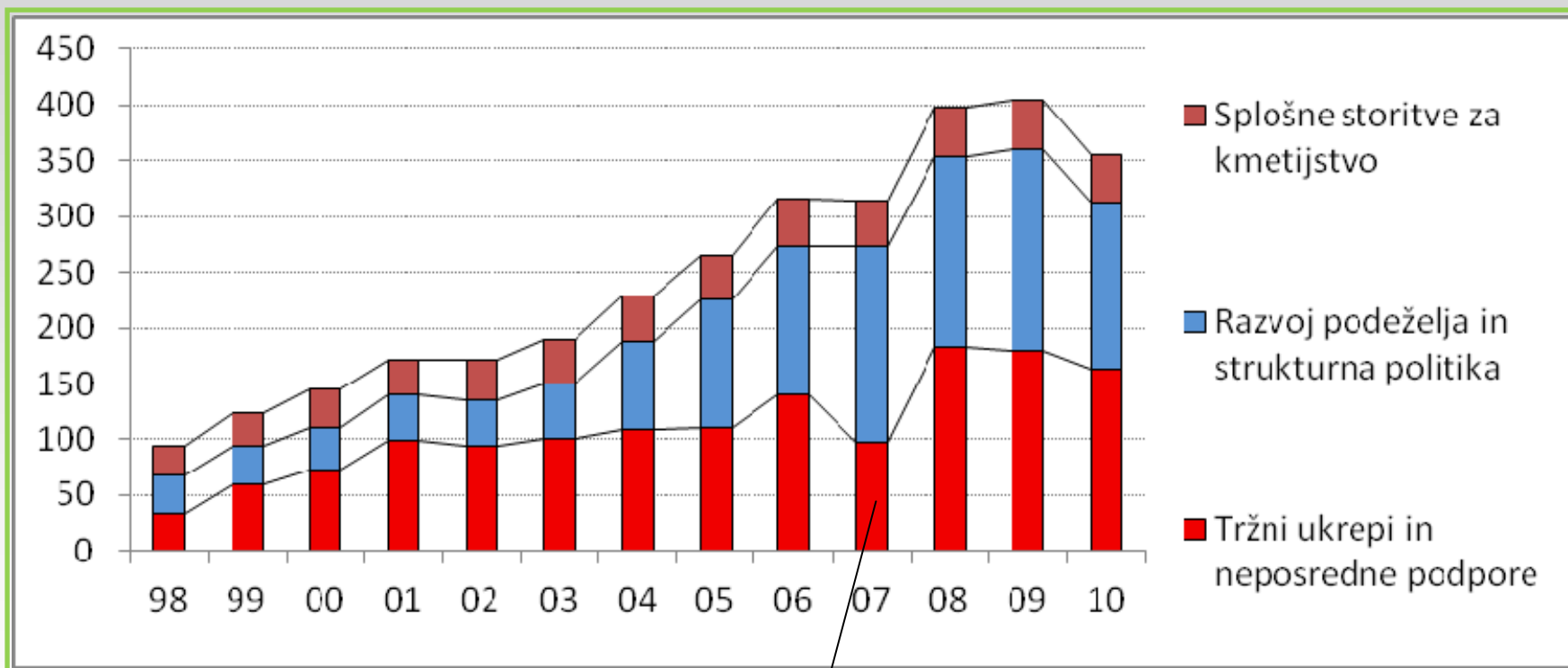
	08/07	09/08	10/09	11/10
Kmetijski proizvodi	108	85	100	106
Inputi 1	117	88	100	113
Pariteta	92	96	100	94

	08/07	09/08	10/09	11/10
Semena in sadike	104	103	89	110
Energija; Maziva	113	83	116	113
Gnojila in sr.za izboljšavo tal	188	78	91	120
Sredstva za varstvo rastlin	102	104	98	101
Veterinarske storitve	101	102	100	100
Krmila	119	82	98	123

Vir: SURS; ocene KIS

Proračun

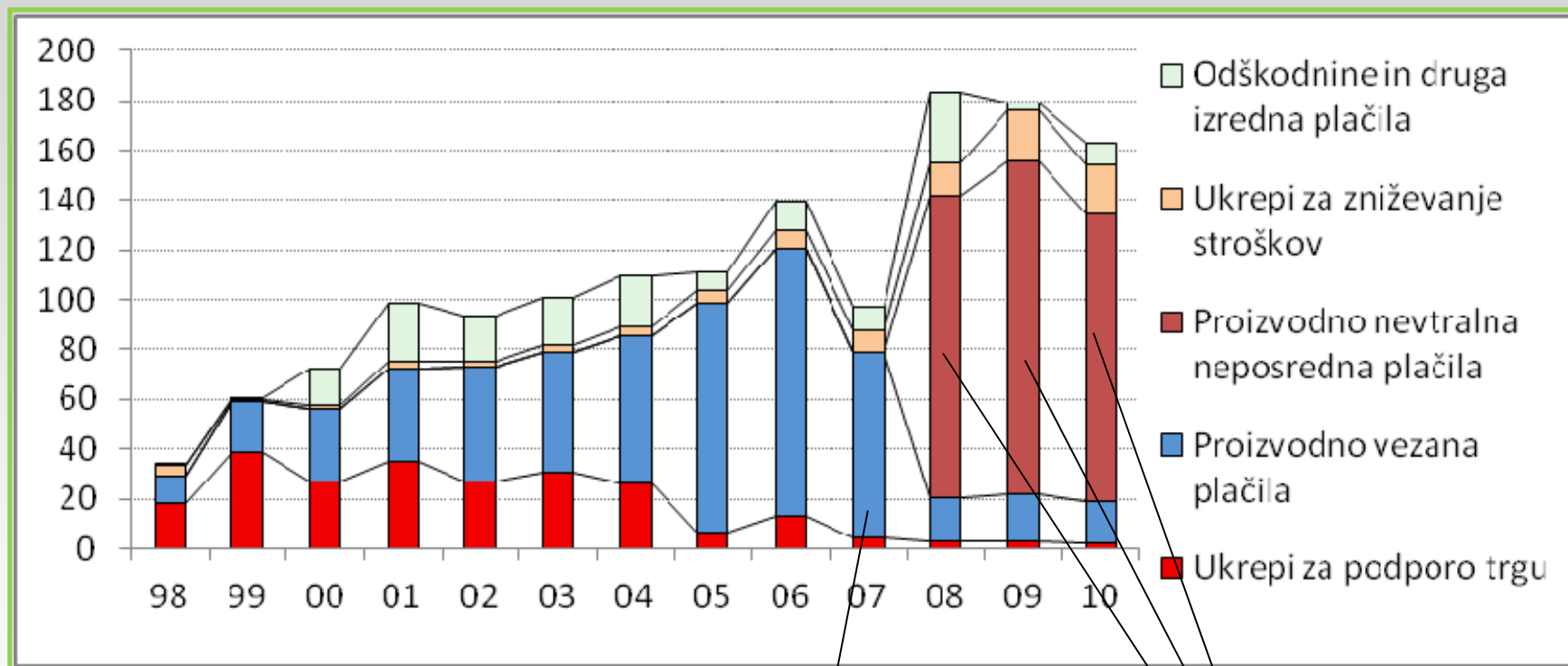
PRORAČUNSKI IZDATKI ZA KMETIJSTVO (Izplačila: milijon Euro)



Samo poravnava
zaostalih plačil

Proračun

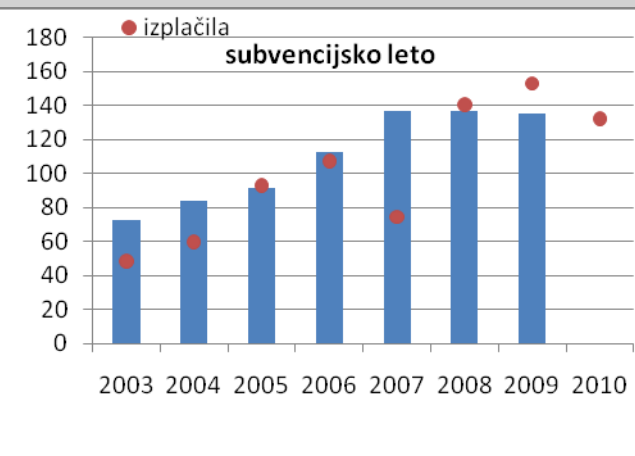
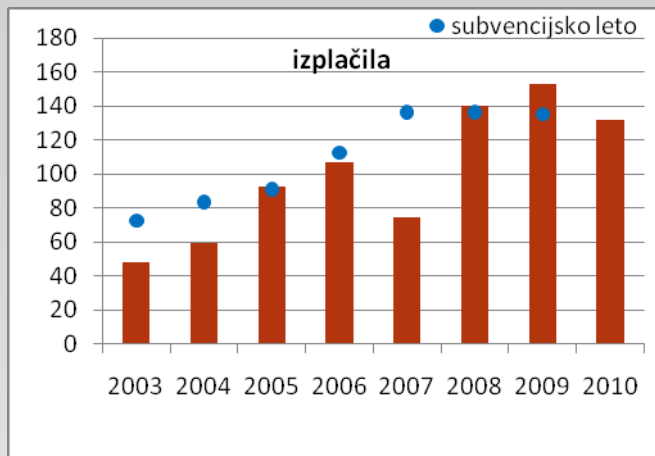
IZDATKI TRŽNO-CENOVNE POLITIKE (Izplačila: milijon Euro)



Samo poravnava
zaostalih plačil

Različna dinamika
izplačil

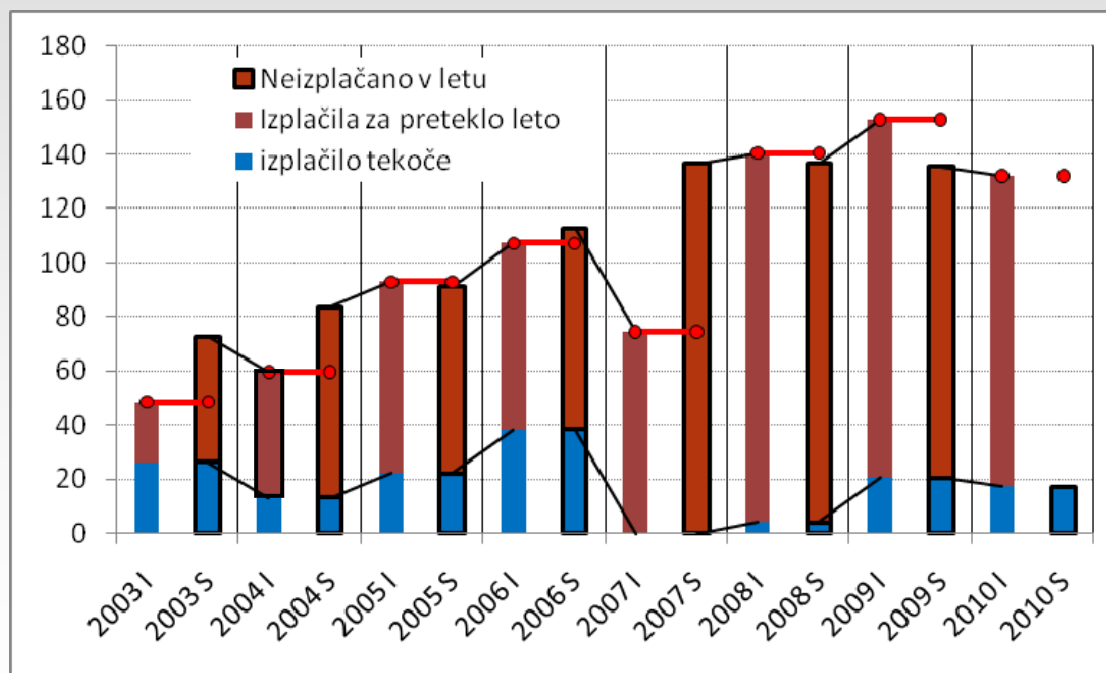
Proračun



Neposredna
plačila

ZAMIKI
PLAČIL

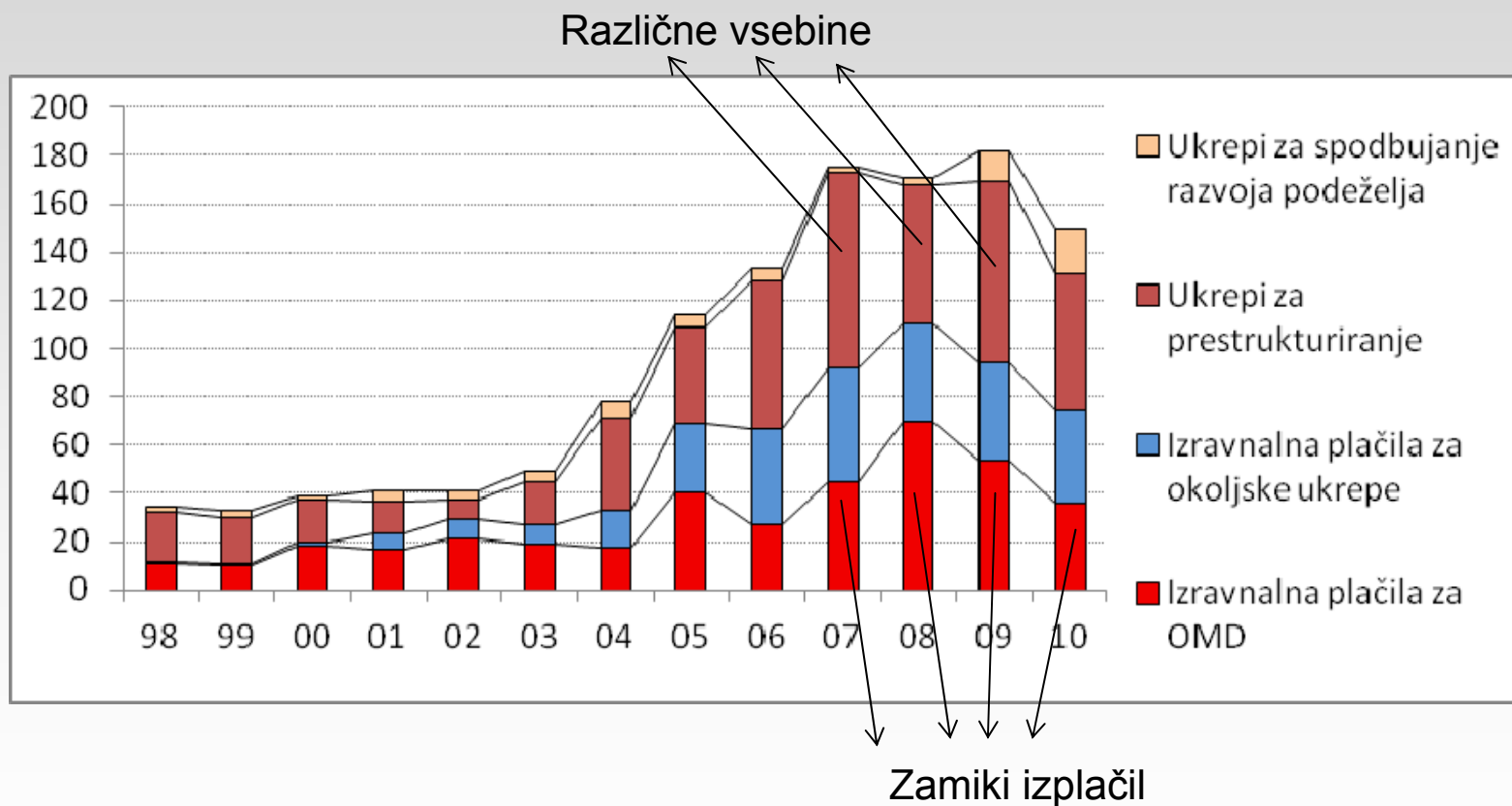
(milijon Euro)



Vir: MKGP; preračuni KIS

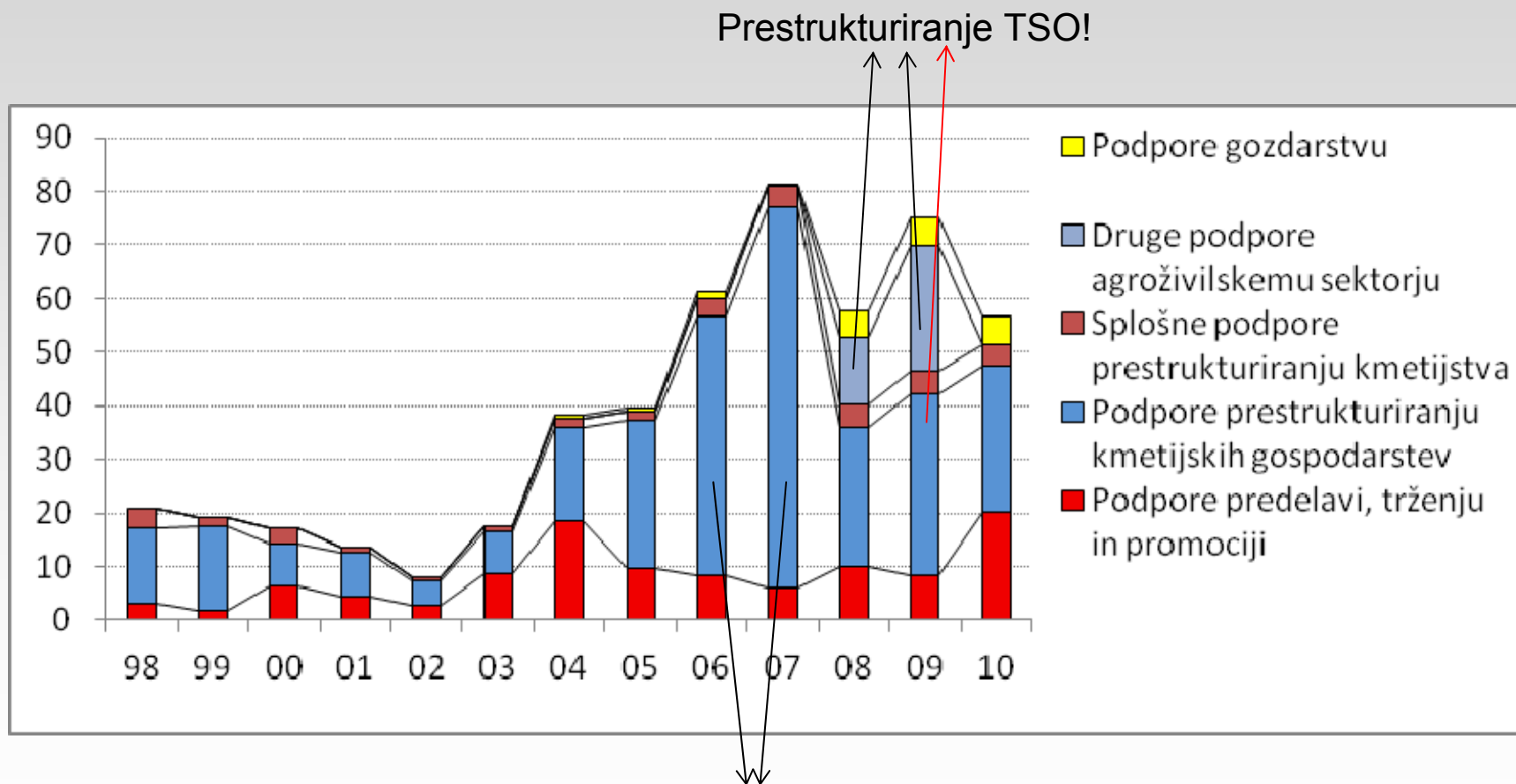
Proračun

IZDATKI ZA UKREPE POLITIKE RAZVOJA PODEŽELJA (izplačila: milijon Euro)



Proračun

IZDATKI ZA UKREPE ZA POVEČANJE KONKURENČNOSTI KMETIJSTVA (Izplačila: milijon Euro)

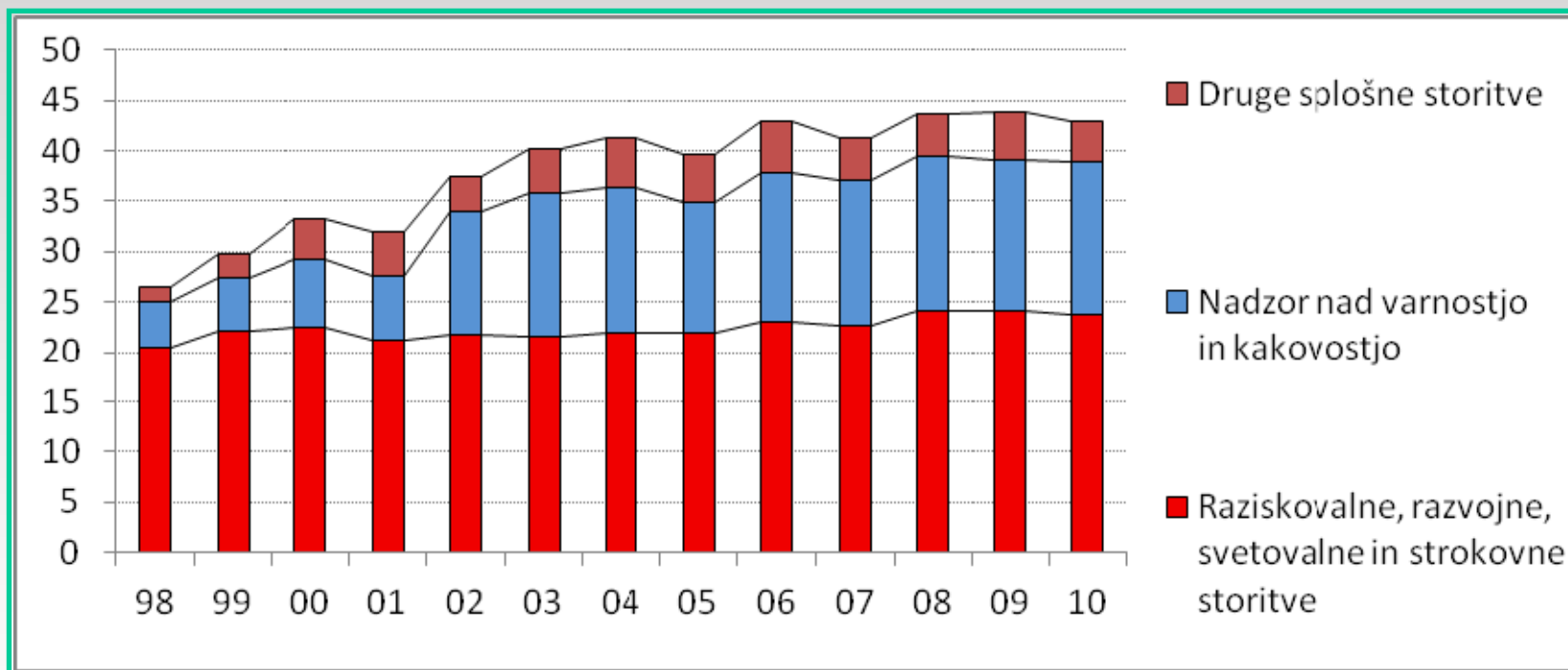


Vir: MKGP; preračuni KIS

Velik vpliv plačil za "EU standardi"!

Proračun

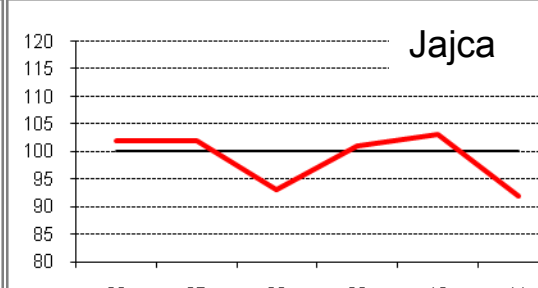
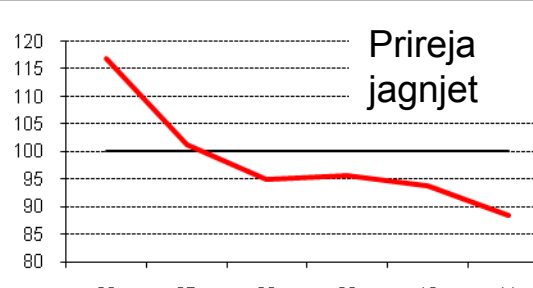
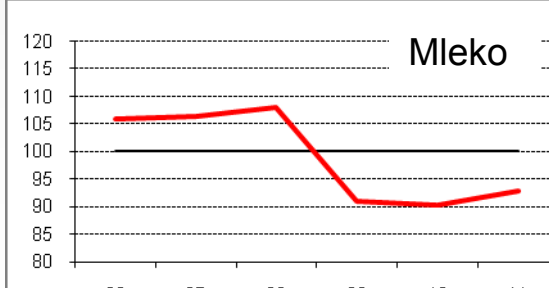
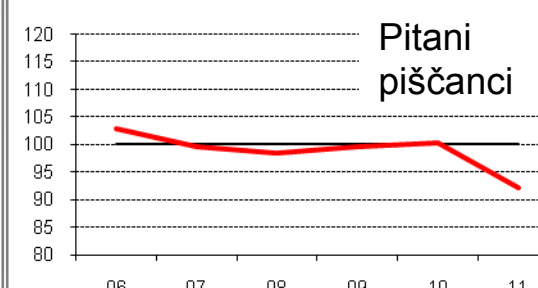
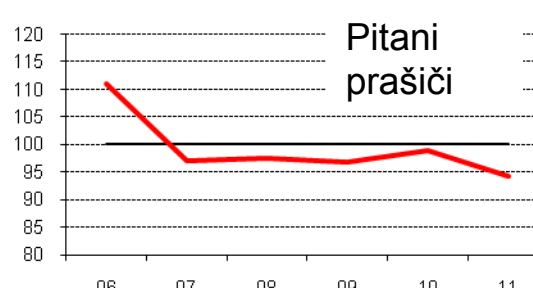
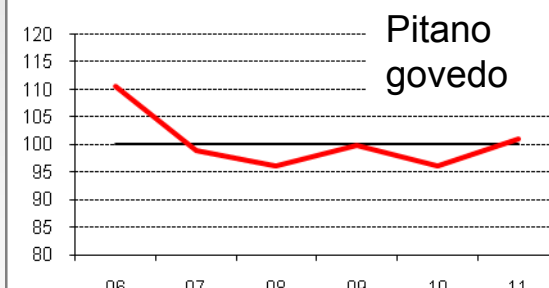
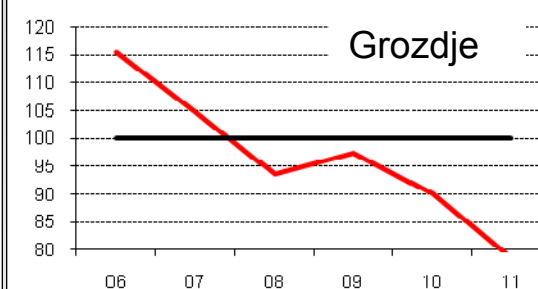
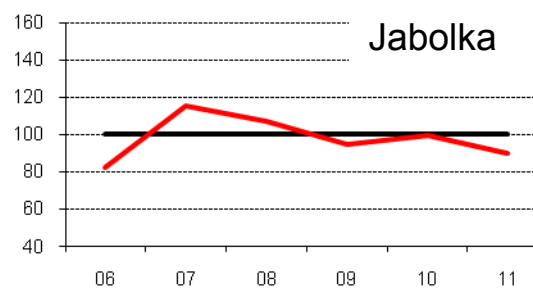
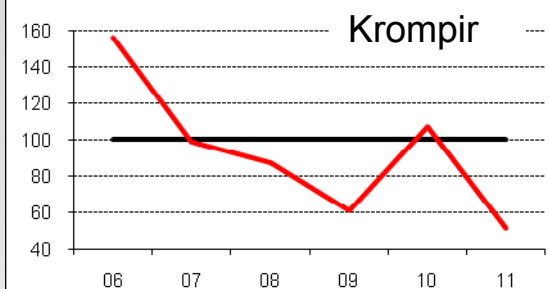
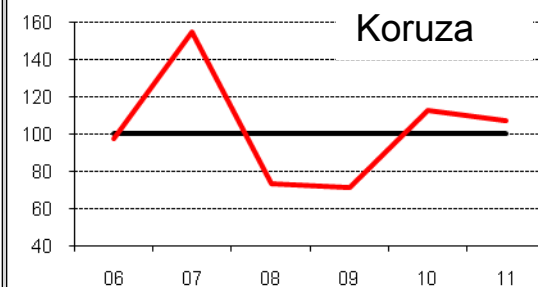
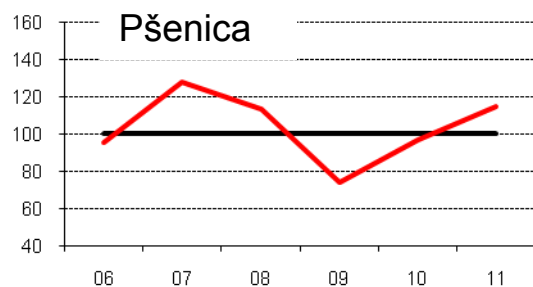
IZDATKI ZA SPLOŠNE STORITVE (Izplačila: milijon Euro)



Vir: MKGP; preračuni KIS

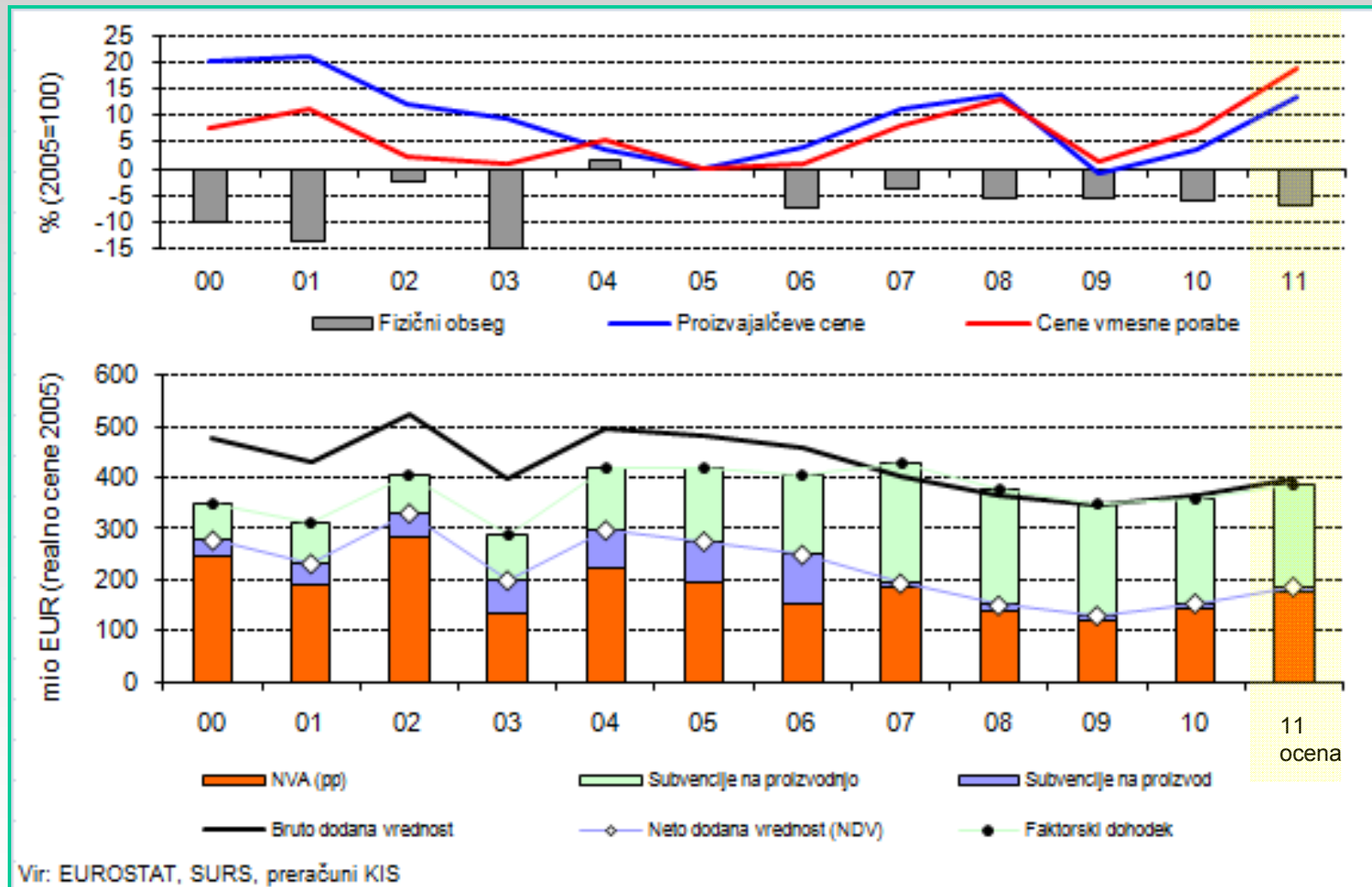
CENOVNO STROŠKOVNA PARITETA

Povprečje 2006-2010 = 100
2011 = ocena



Dohodek

KAZALCI EKONOMSKEGA RAČUNA ZA KMETIJSTVO - ERK



Vir: EUROSTAT, SURS, preračuni KIS

Faktorski dohodek (indeks): 10/09 = 104 (+4%)

Faktorski dohodek (indeks): 11/10 = 107 (+7%)

; 11/povprečje 06-10 = 100 (0%)